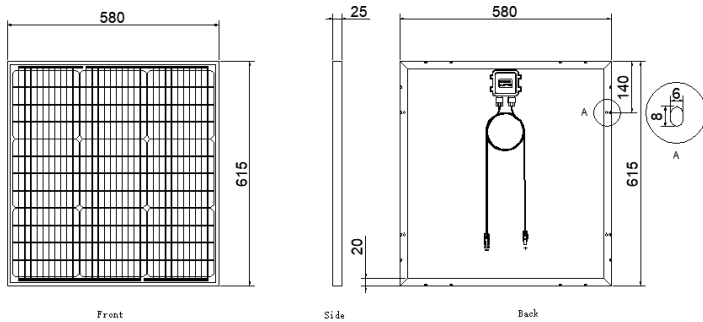
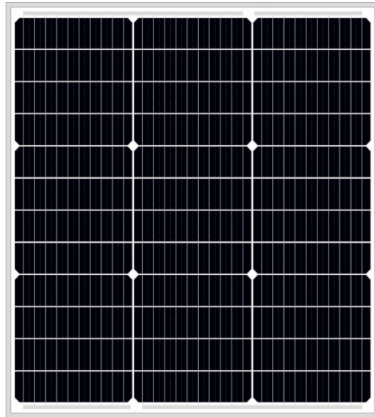


12 YEARS
Guarantee on product material and workmanship

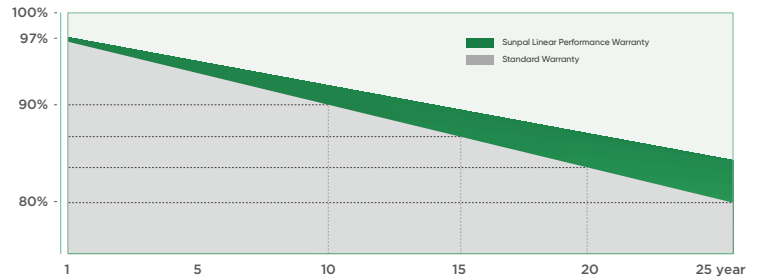
25 YEARS
Linear Power output warranty

STC irradiance
STC irradiance 1000W/m²
Cell Temperature 25°C AM=1.5

NOCT irradiance
NOCT irradiance 800W/m²
Ambient Temperature 20°C AM=1.5



Additional Value



MECHANICAL CHARACTERISTICS

Cell Type	182x45.5Mono
No. of Cells	36(3x12)
Dimensions	615*580*25mm
Weight	3.75kg
Front Glass	3.2mm high transmission low iron,tempered glass
Frame	Anodized Aluminium Alloy
Junction box	IP65/IP67
Output cables	2.5mm ² cable 50cm+mc4
MaxWind Load/Snow Load	2400Pa/5400Pa

ELECTRICAL DATA(STC)

Model Type	SP60M-36	SP65M-36
Peak Power(Pmax)	60W	65W
Maximum Power Voltage(Vmp)	20.26	20.43
Maximum Power Current(Imp)	2.97	3.19
Open Circuit Voltage(Voc)	23.63	23.8
Short Circuit Current(Isc)	3.13	3.37
Module Efficiency(%)	16.82	18.22

* STC: irradiance 1000 W/m², AM 1.5G, and cell temperature of 25°C

TEMPERATURE&MAXIMUM RATING

Maximum System Voltage(V)	1000
Maximum Series Fuse Rating(A)	10
Power Tolerance	0~+3%
Pmax Temperature Coefficients(W/°C)	-0.350%
Voc Temperature Coefficients(V/°C)	-0.270%
Isc Temperature Coefficients(A/°C)	+0.048%
NOCT Nominal Operating Cell Temperature(°C)	45±2
Operating and Storage Temperature(°C)	-40~+85

PACKING WAY

20FT	10Packages/2322PCS
40HQ	18Packages/5472PCS

